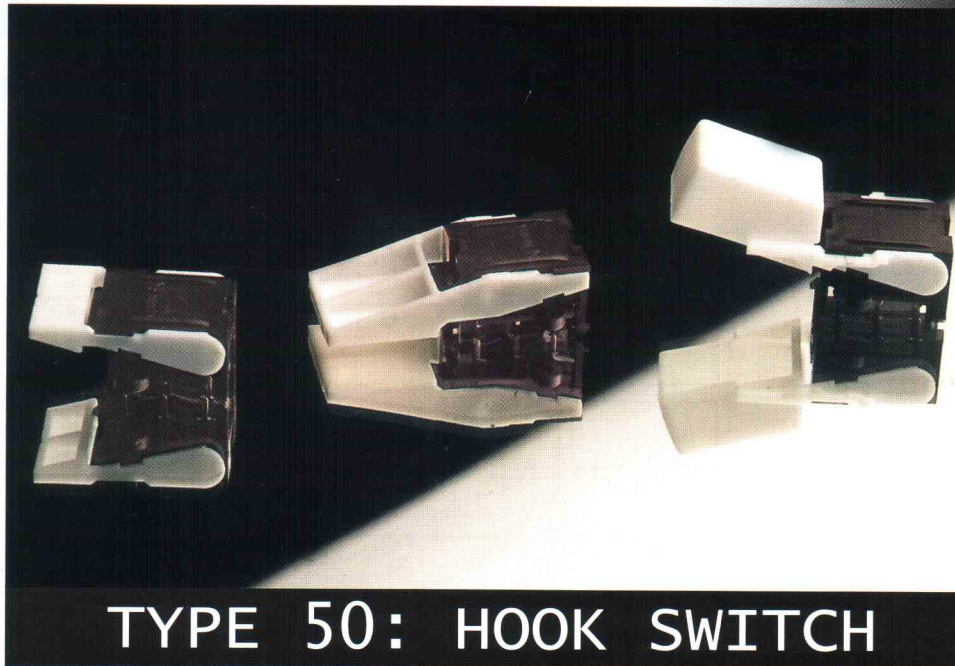


HOOK SWITCHES HAVE UNIVERSAL APPLICATION
IN TELEPHONE INSTRUMENTS.

LOW PROFILE, DOUBLE THROW NON SHORTING
CONTACT CONFIGURATION.

SLIDING CONTACT WITH WIPING ACTION FOR
LONG OPERATING LIFE, SMOOTH AND RELIABLE
ACTUATION.

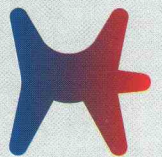


SPECIFICATIONS:

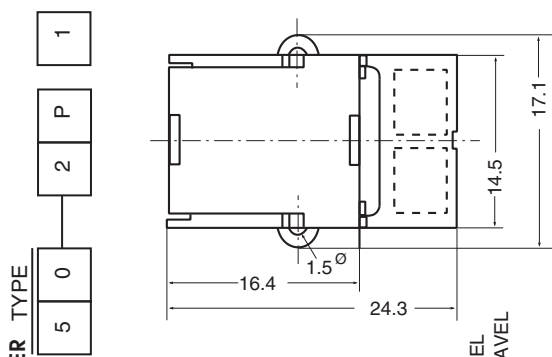
RATING	: MAX. 0.2 A X 48 V DC, RESISTIVE LOAD
CONTACT RESISTANCE	: 50 m Ω MAX. INITIAL, 1 Ω MAX. AFTER LIFE
INSULATION RESISTANCE	: 100 M Ω MIN., 50 V DC
PROOF VOLTAGE	: 500 V AC FOR 1 MIN.
OPERATING FORCE	: 80 gf MAX.
OPERATING LIFE	: 300,000 CYCLES WITH RATED LOAD
RESISTANCE TO SOLDERING HEAT	: MANUAL 270 \pm 10 $^{\circ}$ C - 4 SEC MAX. AUTO 260 \pm 5 $^{\circ}$ C - 6 SEC MAX.

CACT APPROVED.

COMPLIANCE TO IEC 1020-4 SPECIFICATIONS
TESTED AND CERTIFIED BY ERTL (W).

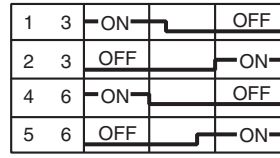


MEHTA SWITCH

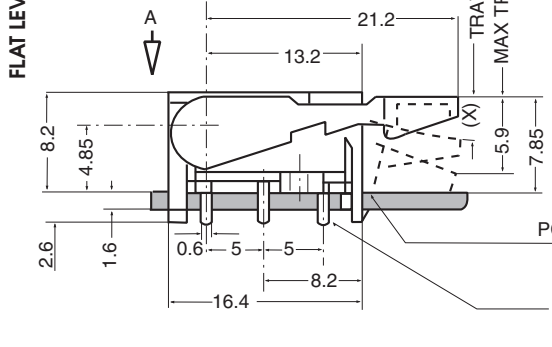


TIME LAG DIAGRAM

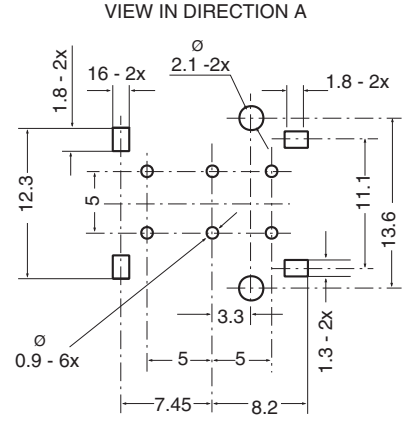
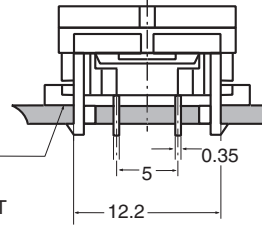
TERMINALS



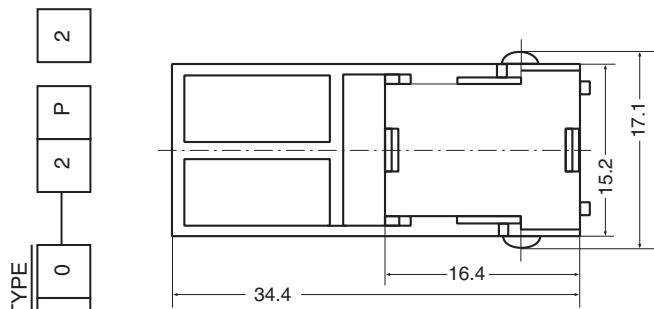
1.2 MIN 5.2 MAX
TRAVEL (x) mm



PCB MOUNTING FACE
TERMINAL- 6: DPDT
TERMINAL- 3: SPDT

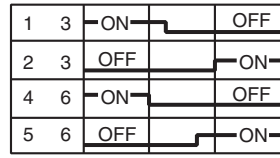


PCB MOUNTING HOLE LAYOUT

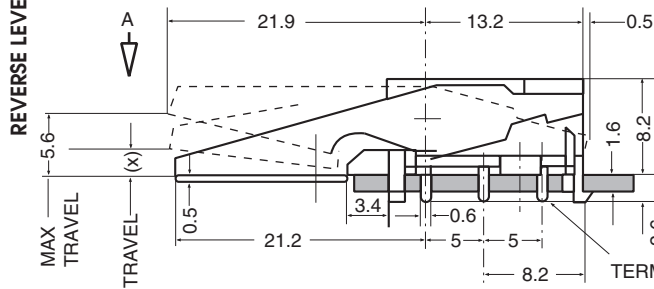


TIME LAG DIAGRAM

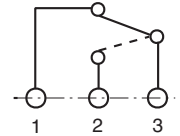
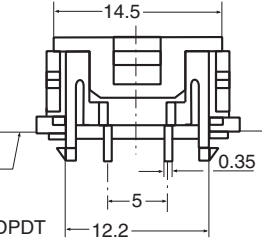
TERMINALS



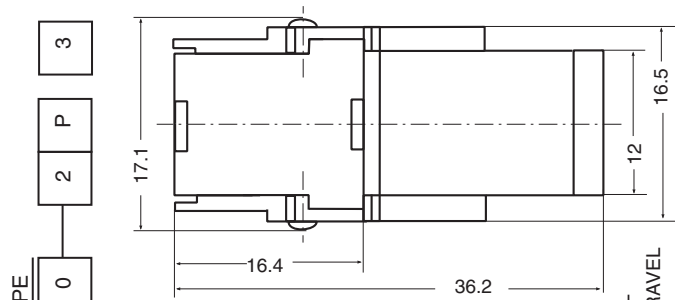
1.2 MIN 5.2 MAX
TRAVEL (x) mm



PCB MOUNTING FACE
TERMINAL- 6: DPDT
TERMINAL- 3: SPDT

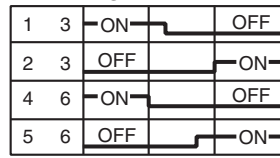


SINGLE POLE CIRCUIT DIAGRAM

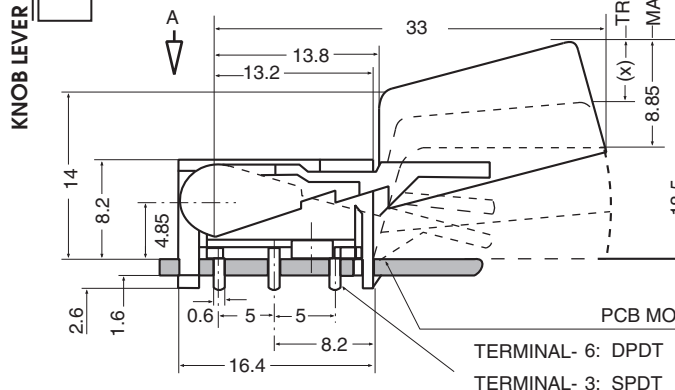


TIME LAG DIAGRAM

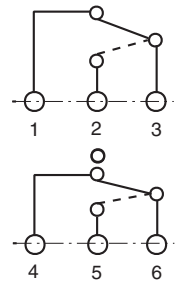
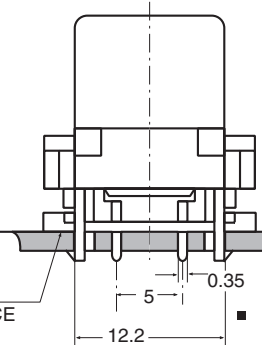
TERMINALS



1.7 MIN 7.5 MAX
TRAVEL (x) mm



PCB MOUNTING FACE
TERMINAL- 6: DPDT
TERMINAL- 3: SPDT



DOUBLE POLE CIRCUIT DIAGRAM

- ALL DIMENSIONS IN mm, TOLERANCE ± 0.2 mm
- ALL CODES ARE GIVEN IN THE BRACKETS ()